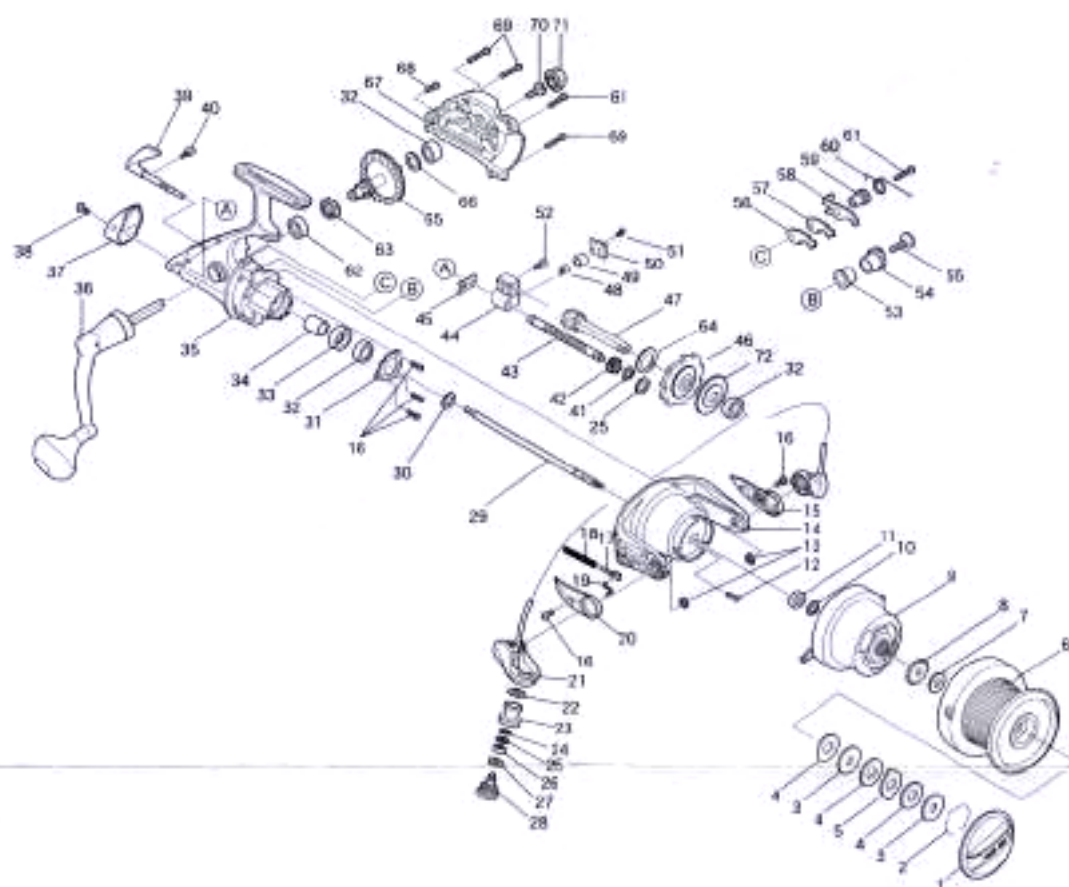


## EXPLODED VIEW

**Sumax**  
**SYSTEM X**  
 STX7000



## PARTS LIST

QTY	PARTS NO.	PARTS NAME	QTY	PARTS NO.	PARTS NAME	QTY	PARTS NO.	PARTS NAME
1	0032807	DRAG KNOB ASSY	26	26248	BALL BEARING	51	20508	SCREW
2	26265	STOPPER SPRING	27	27648	WASHER	52	20530	SCREW
3	26315	DRAG WASHER	28	21153A	ROLLER SCREW	53	17426	COLLAR
4	26012E	DRAG WASHER	29	34811	MAIN SHAFT	54	10466A	CONNECTING GEAR
5	26011	EAR WASHER	30	27333	WASHER	55	21154	CONNECTING SUPPORT SCREW
6	02062564	SPOOL ASSY.	31	30161	BEARING SUPPORT	56	68496	ANTI-REVERSE CLAW SUPPORT
7	27996	CLICK WASHER	32	26068	BALL BEARING	57	49053	ANTI-REVERSE CLAW RUBBER
8	13120	CLICK	33	17429	COLLAR	58	33323	ANTI-REVERSE CLAW
9	68582	LINE TRAP PREVENTION RING	34	17428A	SPACER	59	17427	COLLAR
10	42013	STOPPER RING	35	02033060	MAIN BODY ASSY.	60	67094	CLAW SPRING
11	18028	NUT	36	021824A	HANDLE ASSY.	61	20556A	SCREW
12	20092	SCREW	37	41524A	PROTECTOR	62	38274	BUSH
13	42009	RETAINING RING	38	20028	SCREW	63	10466	MAIN HELICAL GEAR
14	0206261A	ROTOR ASSY.	39	0215674	ANTI-REVERSE ASSY.	64	67801	WASHER
15	41523A	COVER B	40	21155	STOPPER SCREW	65	08275	MAIN GEAR
16	20219A	SCREW	41	42006	STOPPER RING	66	27328	WASHER
17	68483	SLIDER	42	10467	TRAVERSE GEAR	67	04499B	SIDE PLATE
18	67096	DEAD POINT SPRING	43	14347	TRAVERSE CAM	68	20627	SCREW
19	68492	LINK	44	11166	OSCILLATOR	69	18369	SCREW
20	41522A	COVER A	45	30160	TRAVERSE PLATE	70	21106	HANDLE SCREW
21	0229360	BAIL ARM ASSY.	46	0268002	ONE WAY CLUTCH ASSY	71	19480A	HANDLE CAP
22	27705	THRUST WASHER	47	09328	PINION GEAR	72	67802	CLUTCH CAP
23	25094A	ROLLER	48	33524	CLAW			
24	42021	STOPPER RING	49	10356	BUSH			
25	27221	SPACER WASHER	50	30159	CLAW SUPPORT			

## SPECIFICATIONS

Model Name	Gear Ratio	Max. Drag Power	Weight	Ball Bearing	Line Capacity (lb-ft)
STX7000	3.9:1	12 kg	690g	4+1	8-547    10-437    15-383

DESIGNED AND ENGINEERED IN JAPAN